

**Department of Marine & Wildlife Resources**  
**Report on the NMFS Logbook Program for the**  
**American Samoa Longline Fishery**  
**Calendar Year 2004**

May 18, 2005

The Department of Marine and Wildlife Resources (DMWR) began processing the longline logbook data locally at the beginning of the year 2000. Logbook data is summarized by date of haul as shown by the table below. All submitted logbook data for longline activities during 2004 have been processed and are reported in this preliminary report. However as of May 18, 2005, the documented delinquency rate according to the DMWR Daily Effort Census and Delinquency Reporting System for 2004 was 5.91%. Therefore, the data in this report are preliminary and are from the logs submitted to DMWR as of May 18, 2005.

According to the Daily Effort Census 45 vessels were engaged in longline fishing during 2004. Of these 40 vessels turned in longline logs for sets made during the year as shown by Figure 1. The 5 delinquent vessels were all alias, some located in remote villages outside the normal sampling area, and all had relatively minor catch and effort during the year according to cross-checks into the cannery landings database. The logbooks submitted by the 40 vessels indicated they made 4,823 sets and set 11,670,935 hooks. the number of vessels turning in logs is down by 21.6% (40 from the 51 of last year), the number of sets is down by 22.5% and the number of hooks set is down by 17.6%. The difference between the percentage of number of set and number of hooks deployed is due to the increasing proportion of large vessels in the fleet.

Albacore continued to dominate the catch with 150,539 fish caught in 2004 as shown by figure 4. But this is a 35.2% decrease over the 232,437 caught last year. Catches of skipjack tuna increased by 10.5% from last year (45,867), catches of yellowfin tuna increased by 25.1% (38,049) but big eye tuna decreased by 8.8% (14,718). (see figure 5). Catches for mahimahi decreased by 59.3 % (2,551), catch of wahoo increased by 15.1 % (18,468), catch of billfishes decreased by 4.0 % (4,441) and catch of sharks decreased by 9.2 % (9,954).

Albacore CPUE decreased 21.4% to 12.90 fish per 1000 hooks in 2004 compared to a CPUE of 16.41 for 2003 as shown by Figure 7. The CPUE for skipjack tuna increased by 34.1% (3.93), CPUE for yellowfin increased by 51.8% (3.26) and CPUE for big eye tuna increased by 10.8% (1.26). CPUE for Mahimahi decreased by 50.6 % while CPUE for Wahoo increased by 39.7 % (1.58), CPUE for billfish increased by 16.5% (0.38) and CPUE for sharks increased by 10.2% (0.85) as shown by figure 9.

## Western Pacific Logbook Summary Report for Calendar Year 2004

Vessels landing or based in American Samoa  
Based on Date of Haul for all areas

### TRIP INFORMATION

Number of Vessels:	40
Number of Sets:	4823
1000's of Hooks Set:	11671
Number of Lightsticks Used:	2465

### CATCH INFORMATION

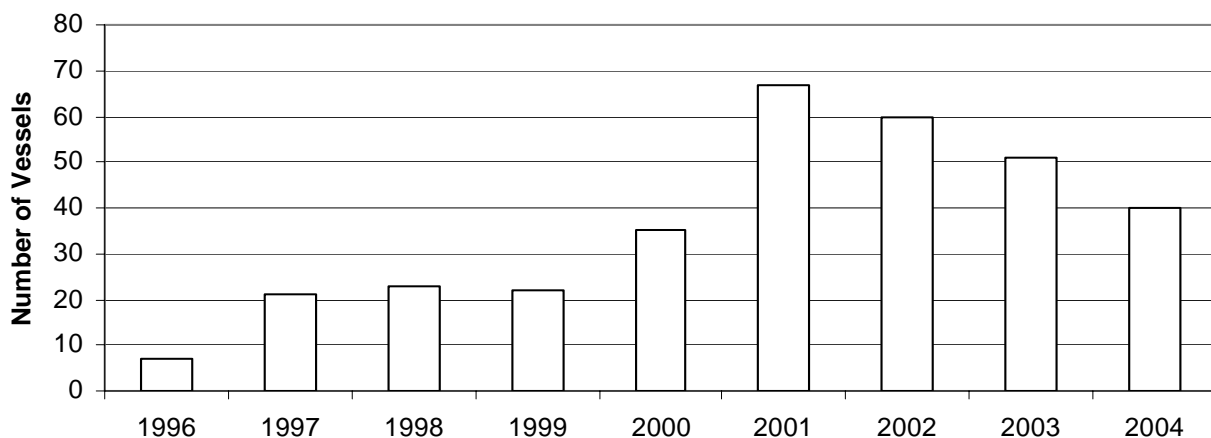
Species	# Caught	# Kept	# Finned	# Caught/ 1000 Hooks
<b>BILLFISH</b>				
Black marlin	17	4		0.00
Blue marlin	2114	210		0.18
Striped Marlin	222	62		0.02
Sailfish	792	57		0.07
Spearfish	963	39		0.08
Swordfish	333	166		0.03
<b>TOTALS</b>	<b>4441</b>	<b>538</b>		<b>0.38</b>
<b>SHARKS</b>				
Blue shark	7051	26	1	0.60
Mako Shark	264	6		0.02
Thresher Shark	429	0		0.04
White-Tip Shark	1876	2	3	0.16
Other Pelagic Sharks	334	0		0.03
<b>TOTALS</b>	<b>9954</b>	<b>34</b>	<b>4</b>	<b>0.85</b>
<b>TUNA</b>				
Albacore	150539	149612		12.90
Bigeye Tuna	14718	13987		1.26
Bluefin Tuna	14	13		0.00
Skipjack Tuna	45867	37524		3.93
Yellowfin Tuna	38049	36777		3.26
<b>TOTALS</b>	<b>249187</b>	<b>237913</b>		<b>21.35</b>
<b>OTHER PELAGICS</b>				
Mahimahi	2552	2001		0.22
Moonfish	698	117		0.06
Oilfish	7997	81		0.69
Pomfret	1157	181		0.10
Wahoo	18468	16916		1.58
<b>TOTALS</b>	<b>30872</b>	<b>19296</b>		<b>2.65</b>
<b>NON-PMUS</b>				
Other Pelagic Fish	787	32		0.07
<b>TOTALS</b>	<b>787</b>	<b>32</b>		<b>0.07</b>

**Western Pacific Logbook Summary of Protected Species Interactions  
for Calendar Year 2004**

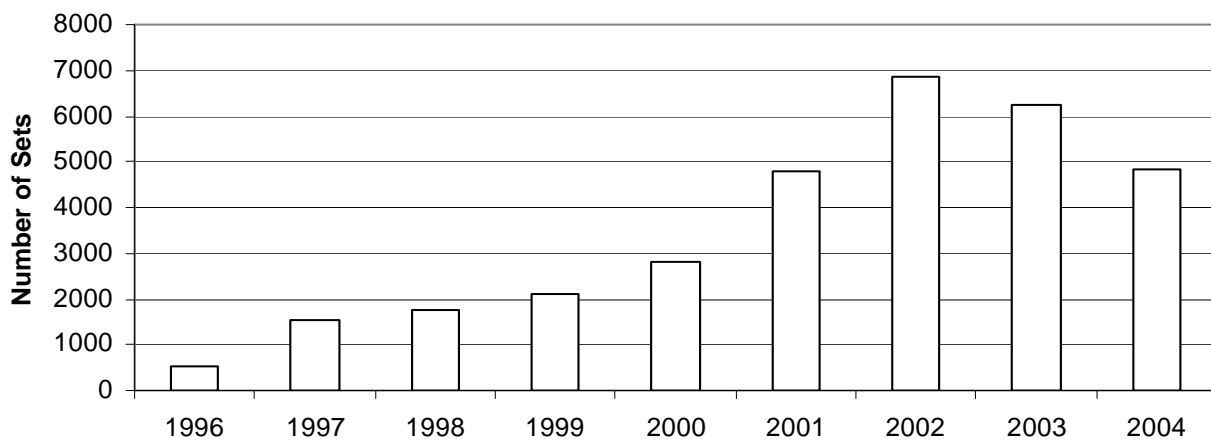
For vessels landing or based in American Samoa  
Based on Date of Haul

<b>Species</b>	<b>Alive</b>	<b>Injured</b>	<b>Dead</b>	<b>TOTAL</b>
<b>SEALS</b>				
Monk Seal	0	0	0	0
Sea Lion	0	0	0	0
Other Seals	0	0	0	0
<b>TOTALS</b>	<b>0</b>	<b>0</b>	<b>0</b>	<b>0</b>
<b>DOLPHINS</b>				
Bottlenose Dolphin	0	0	0	0
Spinner Dolphin	0	0	0	0
Other Dolphins	0	0	0	0
<b>TOTALS</b>	<b>0</b>	<b>0</b>	<b>0</b>	<b>0</b>
<b>WHALES</b>				
Humpback Whale	0	0	0	0
False Killer Whale	0	0	0	0
Other Whales	0	0	0	0
<b>TOTALS</b>	<b>0</b>	<b>0</b>	<b>0</b>	<b>0</b>
<b>TURTLES</b>				
Green Turtle	0	0	0	0
Leatherback Turtle	0	0	0	0
Loggerhead Turtle	0	0	0	0
Olive Ridley Turtle	0	0	0	0
Hawksbill Turtle	0	0	0	0
Hardshell Turtles	0	0	0	0
<b>TOTALS</b>	<b>0</b>	<b>0</b>	<b>0</b>	<b>0</b>
<b>BIRDS</b>				
Blackfoot Albatross	0	0	0	0
Laysan Albatross	0	0	0	0
Short-Tailed Albatross	0	0	0	0
Moonfish	0	0	0	0
<b>TOTALS</b>	<b>0</b>	<b>0</b>	<b>0</b>	<b>0</b>

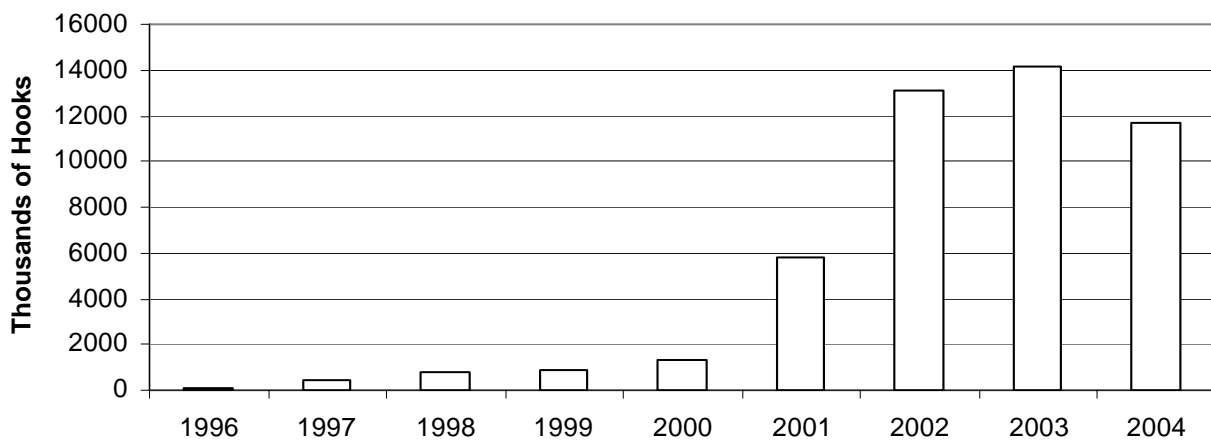
**Figure 1. American Samoa Longline Vessels by Year**



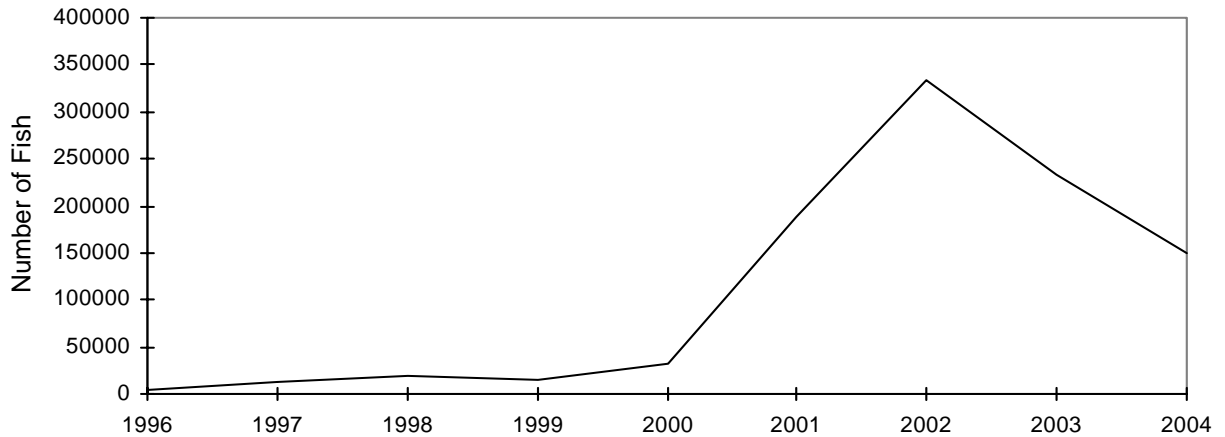
**Figure 2. Number of Sets by American Samoa Longline Vessels by Year**



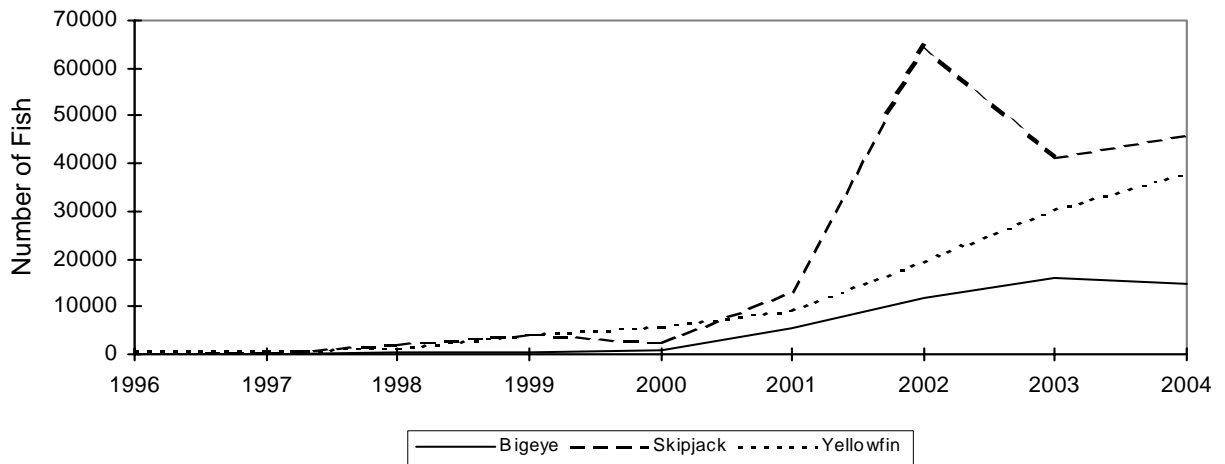
**Figure 3. Number of Hooks Set by the American Samoa Longline Fleet by Year**



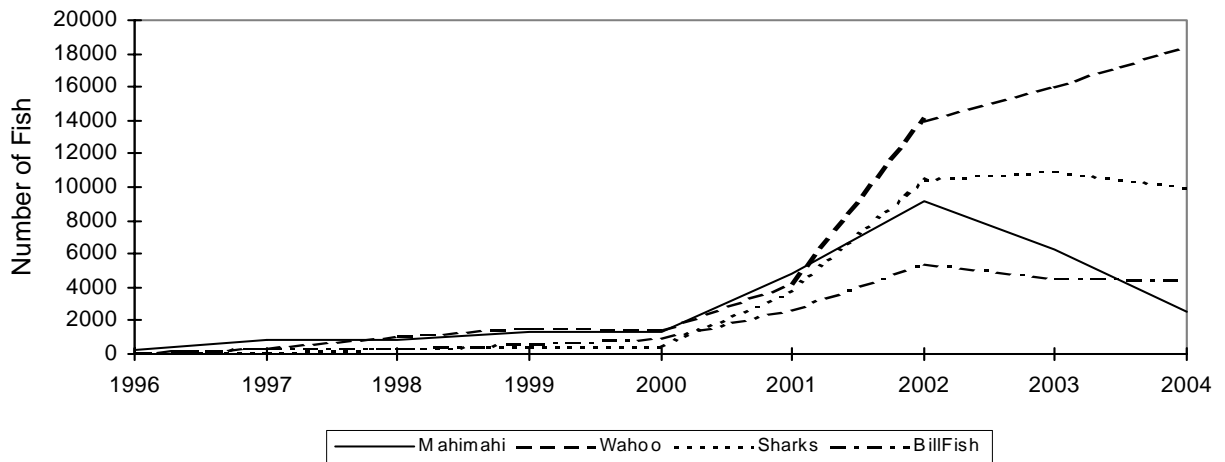
**Figure 4. American Samoa Longline Albacore Catch by Year**



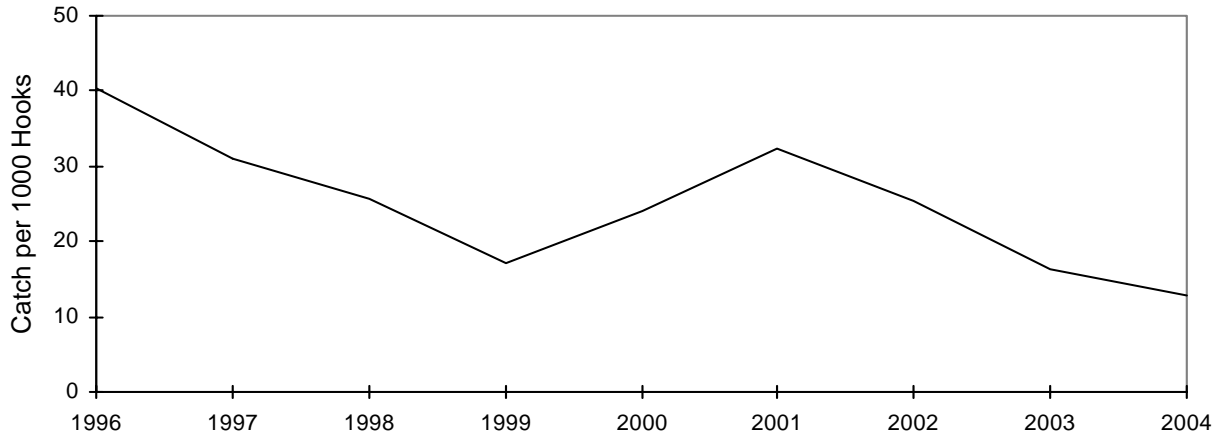
**Figure 5. American Samoa Longline Tuna Catch by Year**



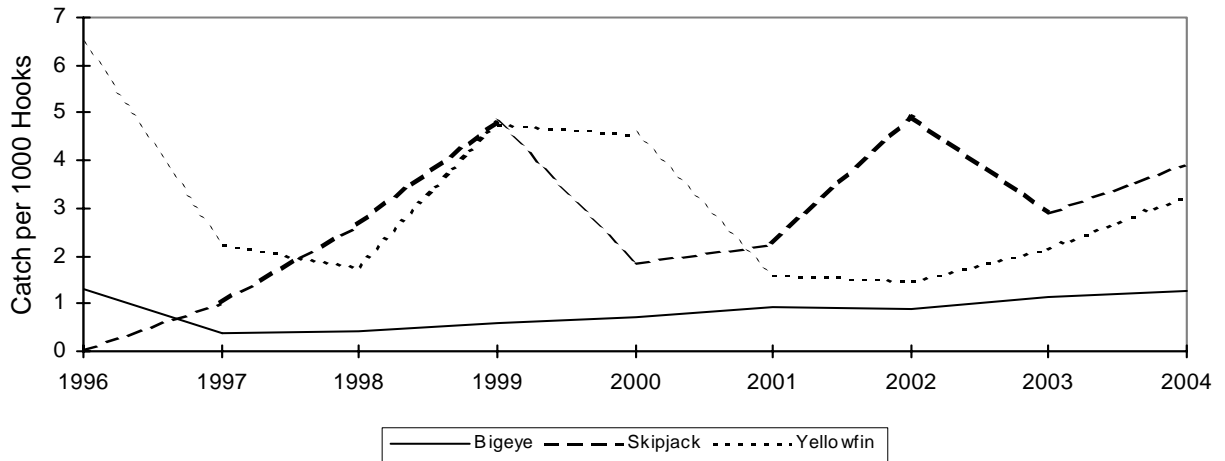
**Figure 6. American Samoa Longline Catch of Miscellaneous Pelagic Fish by Year**



**Figure 7. American Samoa Longline Albacore Catch per 1000 Hooks by Year**



**Figure 8. American Samoa Longline Tuna Catch per 1000 Hooks by Year**



**Figure 9. American Samoa Longline Catch of Other Pelagic Fish per 1000 Hooks by Year**

